

# All May Rest

© 2007 by Richard Bentz





God rest you merry gentlemen  
Of Grunion two sixteen





Aquila made it possible  
Your grave site to be seen





Authentic Equidistant Projection, Centered on Fairbanks  
SCALE 1:8,800,000 or 1 INCH = 80 MILES

- Map Legend
- Divided highway
  - Perov road
  - Unimproved road
  - Passenger railroad
  - Alaska Marine Highway System
  - Oil pipeline
  - Oil field
  - Airport
  - Scheduled air or seaplane service
  - Post
  - Lumber mill
  - Mining
  - Selected settlement (25 or fewer year-round residents)
  - Site
  - Glacier or ice field
  - Wetlands
  - Military installation
  - National Park System
  - National wildlife refuge where state permits
  - National wildlife refuge

Elevations in feet, soundings in fathoms  
Tint based on elevation

ALASKA, END-TO-END  
Is broad in the west; Alaska covers more than 2,200 miles from the tip of its peninsula to the northeast. Another island-raft when mapping it in detail, cartographers nearly always break it into sections for convenience. This map, however, portrays the entire state at the same scale as you, with short

For sixty years you have been at peace  
But miles and miles away  
Your families have wondered  
What happened on that day

RELATIVE SIZE OF ALASKA AND THE CONTIGUOUS U. S.





Sons, daughters, wives and cousins too  
Have lived their whole lives through



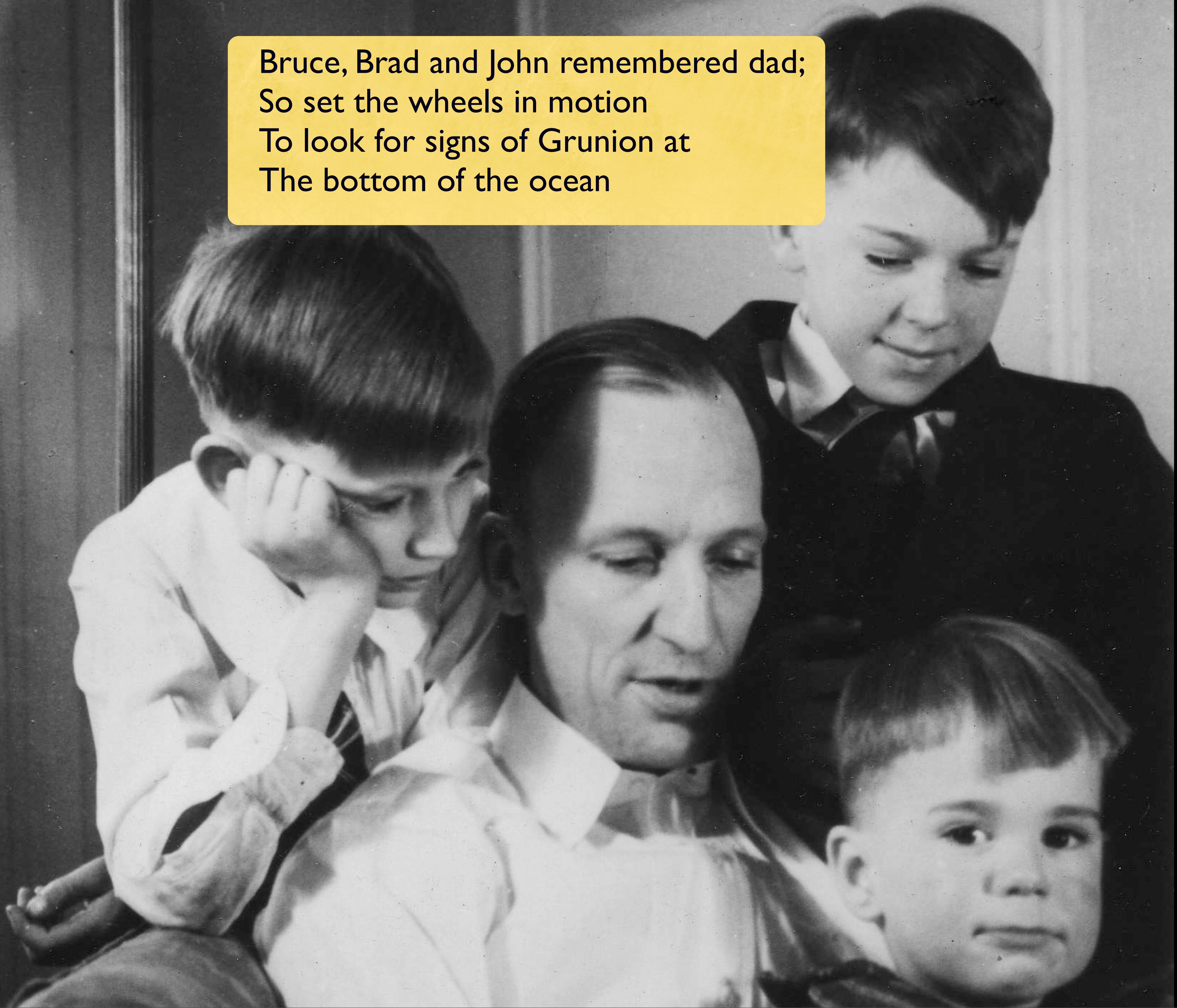


With restless thoughts - and wondering  
Just what became of you





Bruce, Brad and John remembered dad;  
So set the wheels in motion  
To look for signs of Grunion at  
The bottom of the ocean



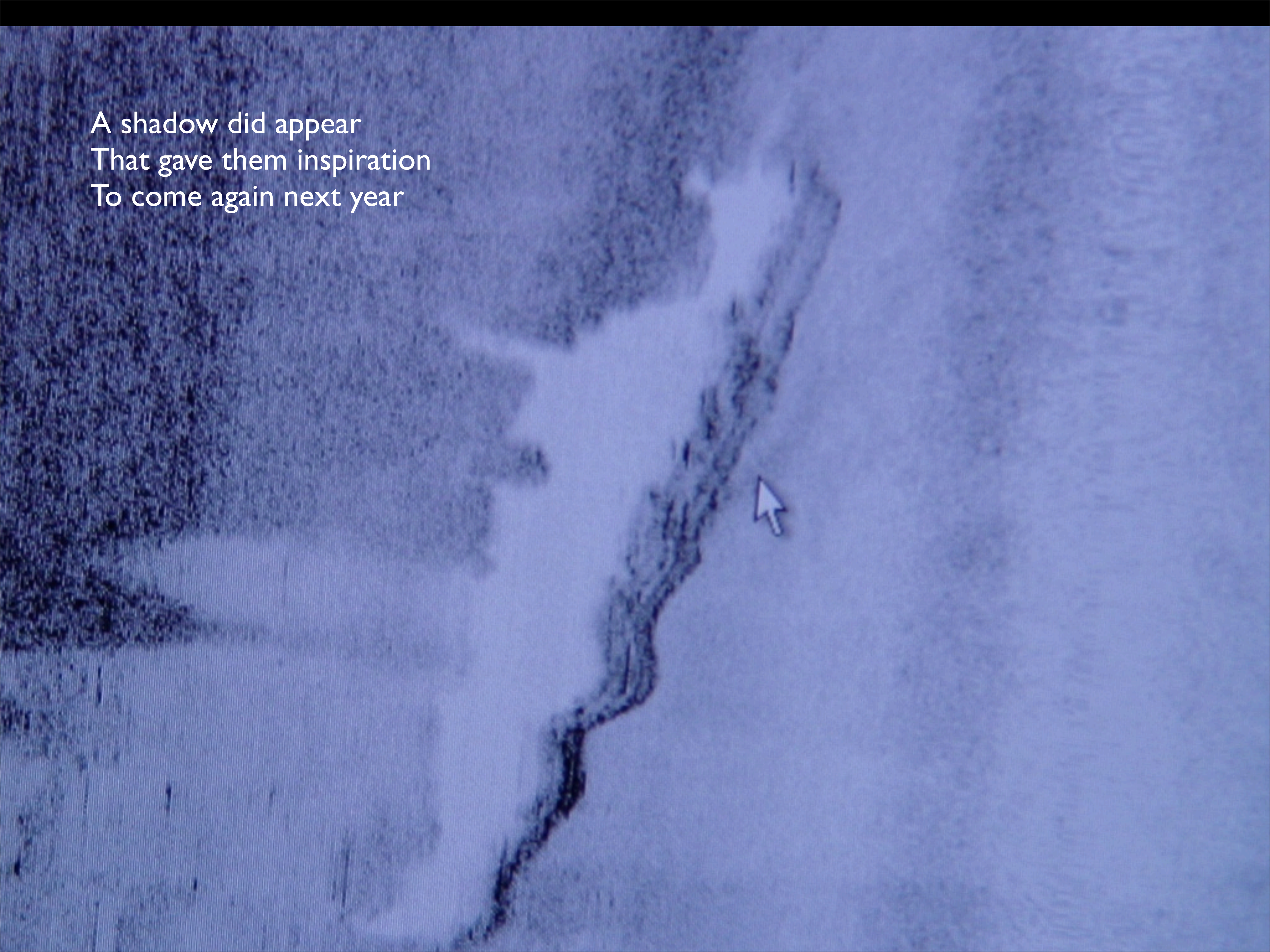


With Sonar's help (Garcias' too)





A shadow did appear  
That gave them inspiration  
To come again next year







Equipped with HD cameras  
Aboard an ROV

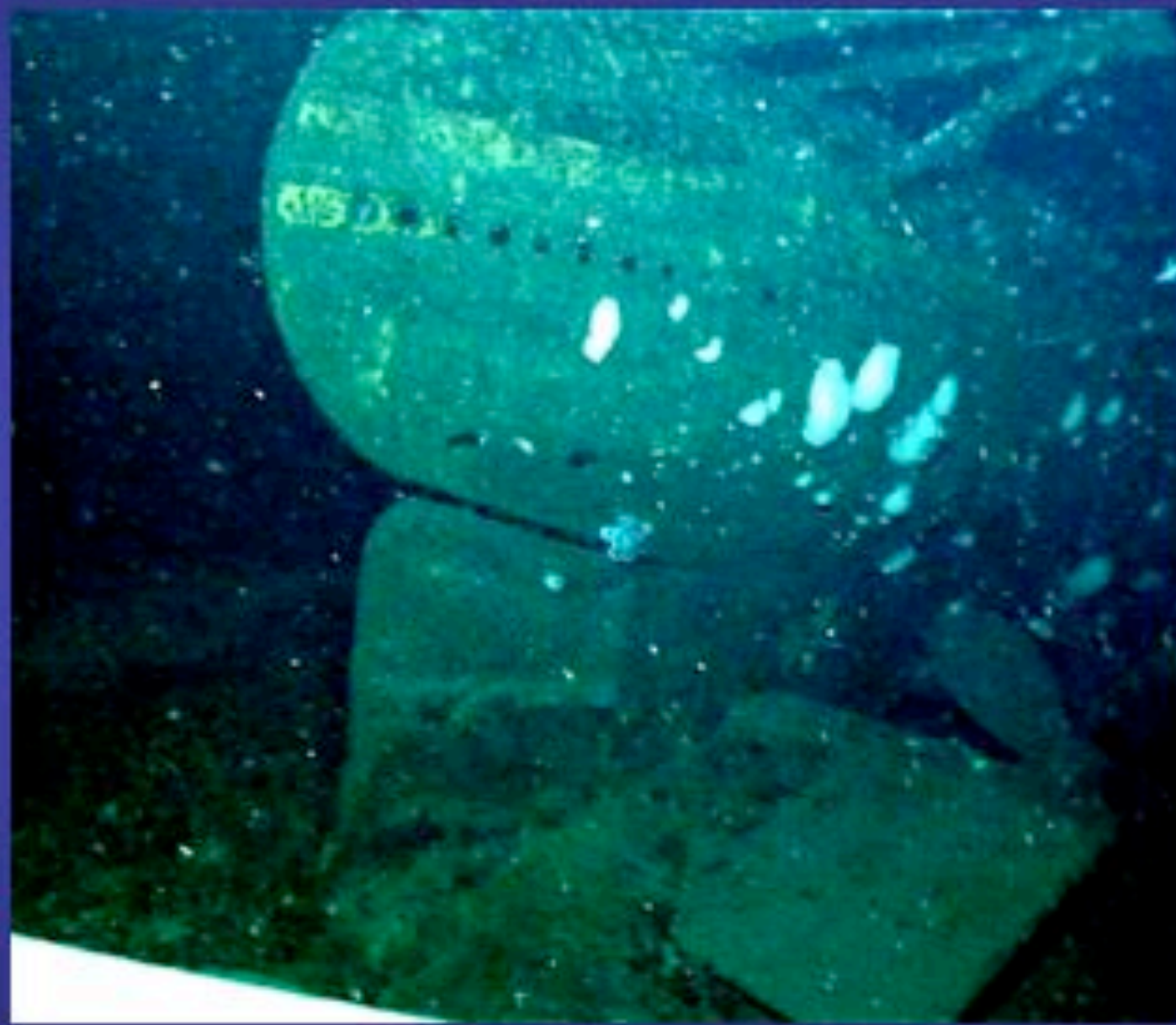


They found what they'd been seeking  
Beneath the Bering Sea

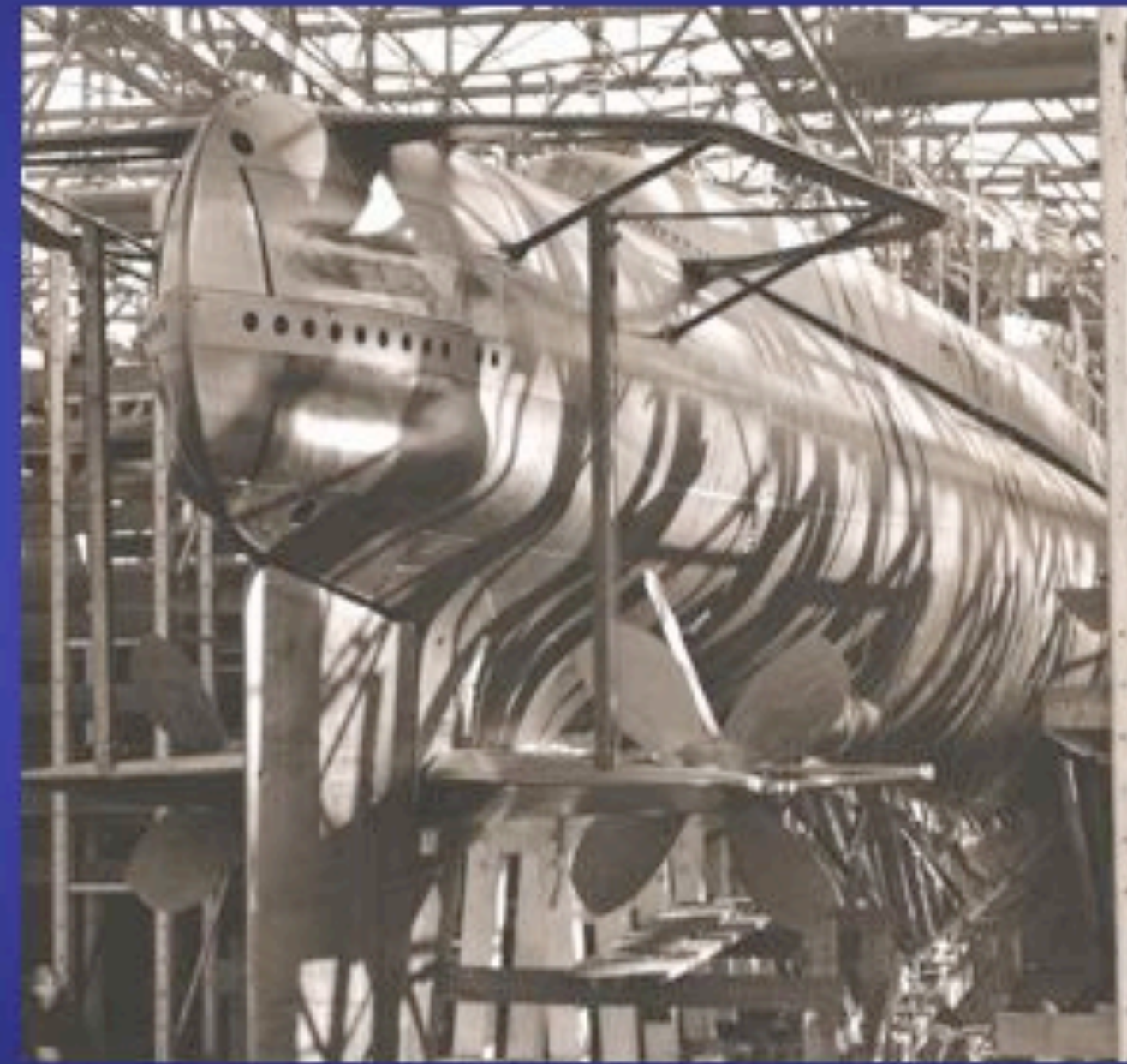




Your secret's out beloved ones.  
We've solved the mystery  
Rest in peace our precious sons;  
And know now, so will we.



**2007**



**1941**



The End