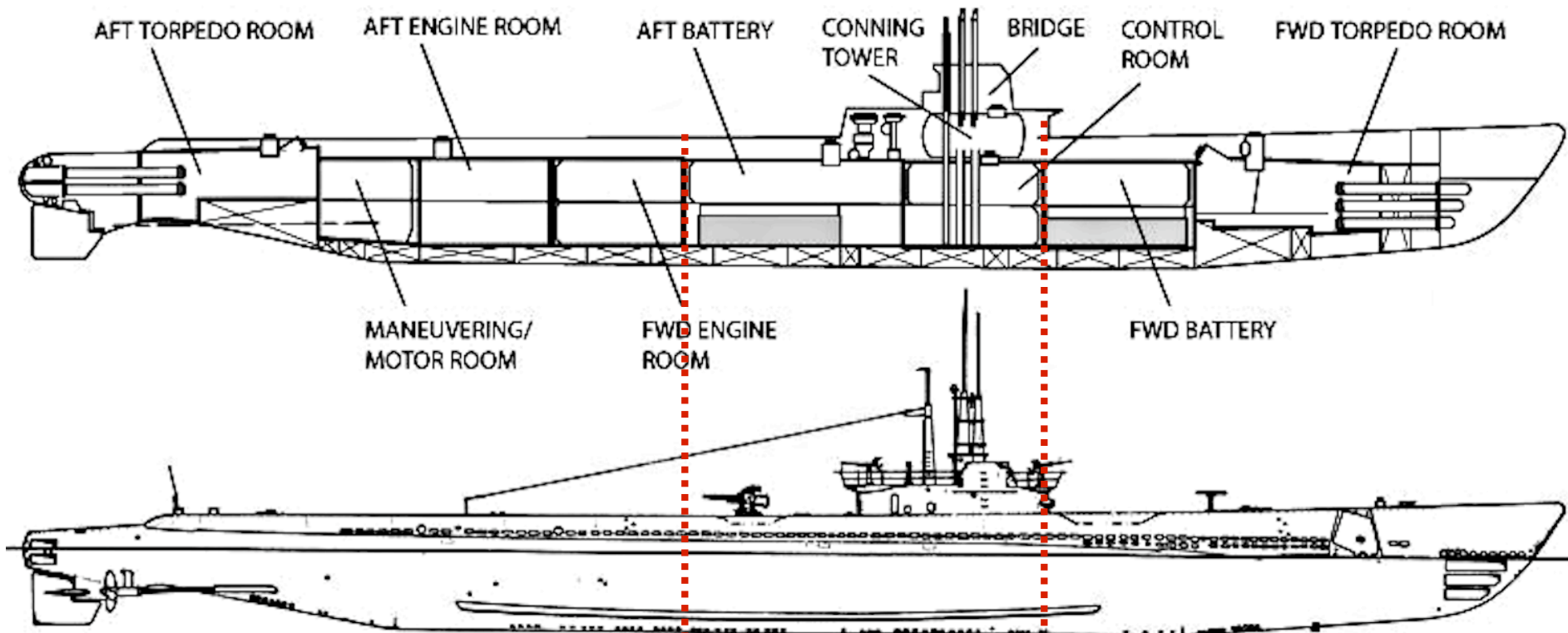


USS GRUNION

SS 216



USS GRUNION - OVERVIEW



Aft Section

- *Forward Engine Room*
- *Aft Engine Room*
- *Maneuvering / Motor Room*
- *Aft Torpedo Room*

Amidships Section

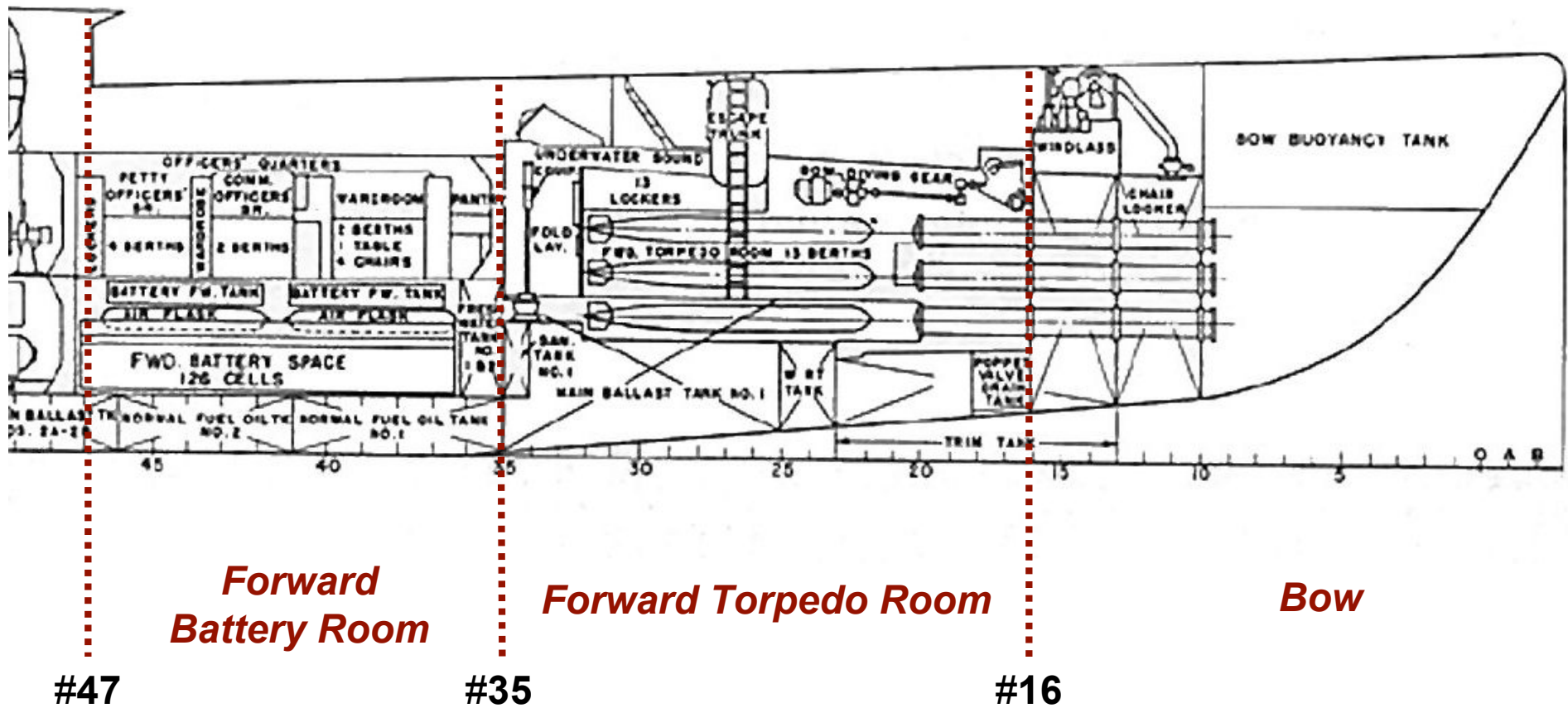
- *Fairwater/ Bridge*
- *Conning Tower*
- *Control Room*
- *Pump Room*
- *Aft Battery Room*

Forward Section

- *Forward Torpedo Room*
- *Forward Battery Room*

NOTE: Diagram is of late-war GATO/BALAO class sub

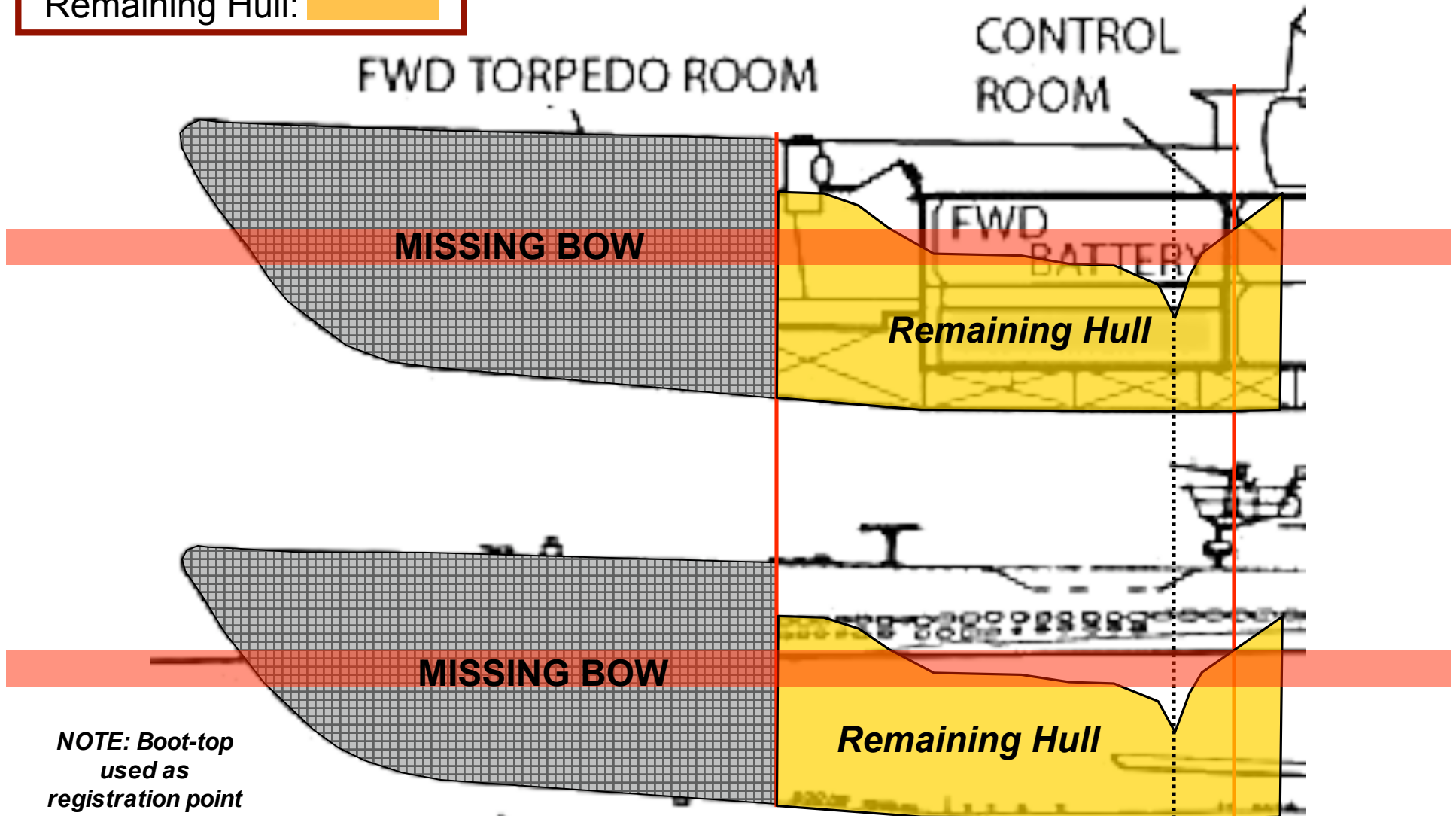
FORWARD SECTION



USS GRUNION; FORWARD SECTION

PORT SIDE

Boot-Topping: 
Hull Break:
Remaining Hull: 

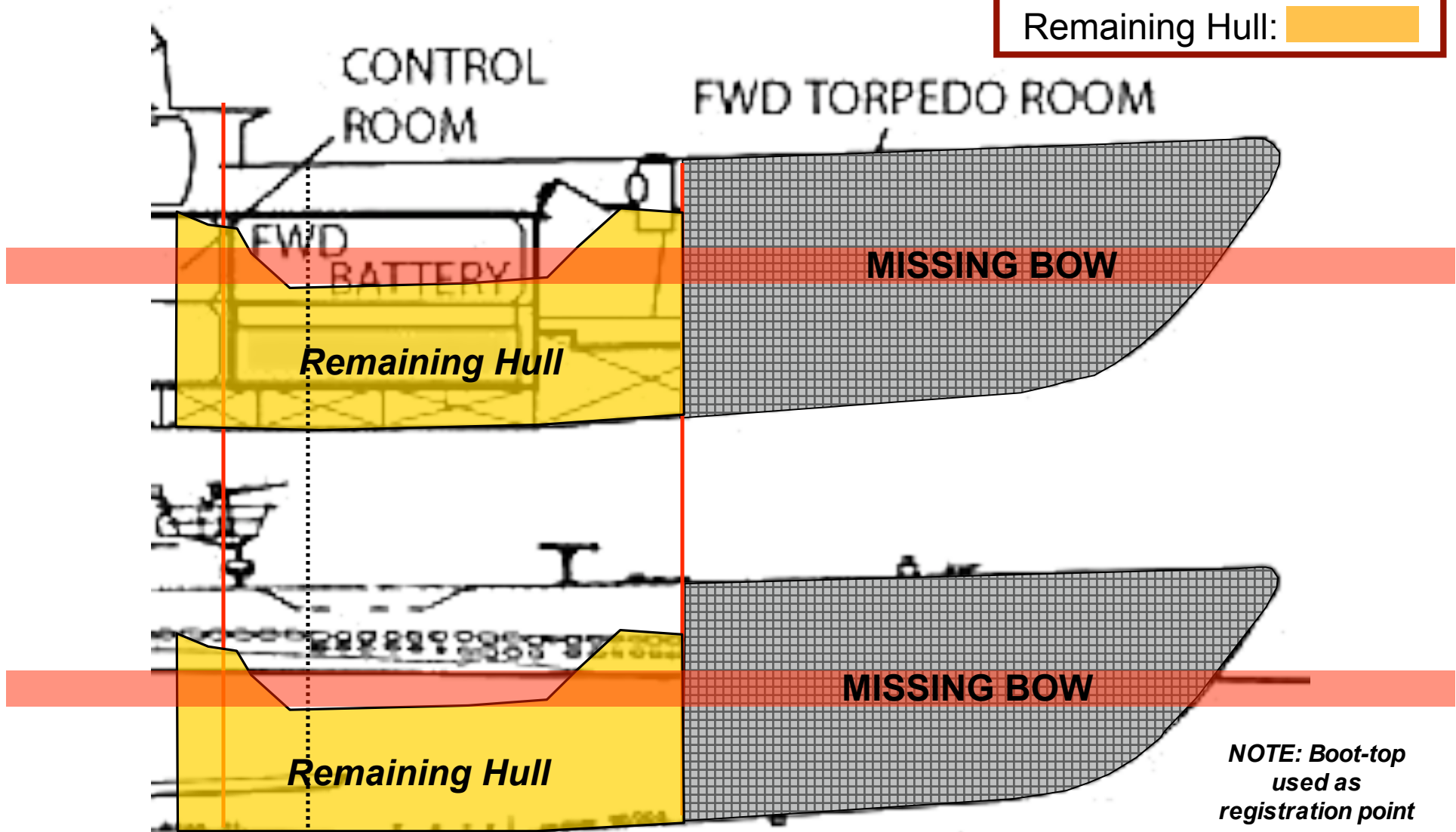


*NOTE: Boot-top
used as
registration point*

USS GRUNION; FORWARD SECTION

STARBOARD SIDE

Boot-Topping: 
Hull Break:
Remaining Hull: 



NOTE: Boot-top used as registration point



***FORWARD
BATTERY
COMPARTMENT***

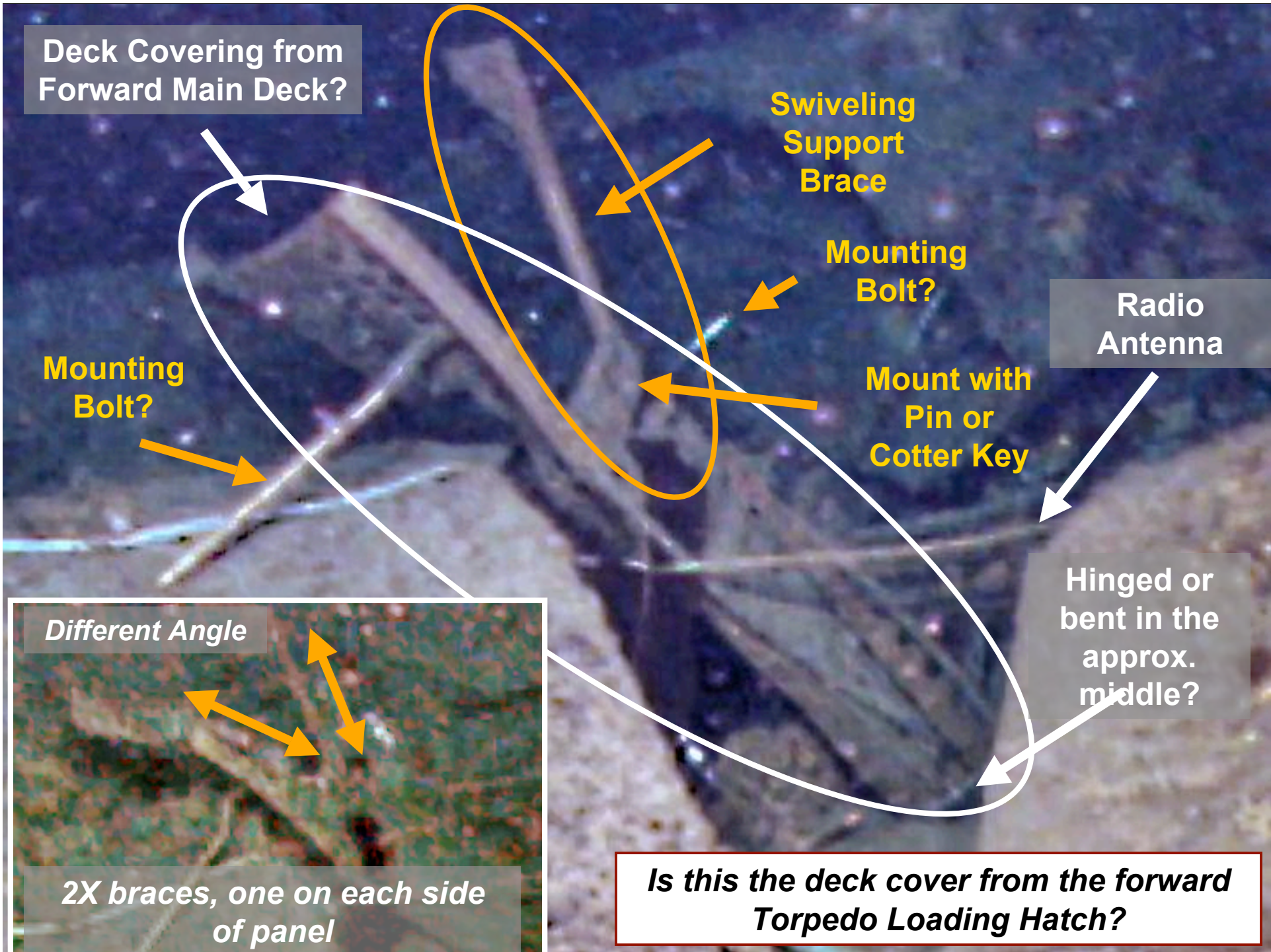
USS GRUNION
Forward Battery Room



1. Radio Mast
2. Radio Mast Truck
3. 10# Blow System Line
4. Torpedo Loading Mast
5. Torpedo Loading Mast Deck Brace
6. Radio Antenna
7. UNKNOWN
8. Torpedo Loading Hatch (Hatch Cover)
9. Light Mast

10. Flapper Valve
11. Vertical Deck Support
12. Horizontal Deck Support
13. JP Hydrophone Head?

**NOTE: IDENTIFICATIONS are
extremely TENTATIVE!**



Deck Covering from Forward Main Deck?

Swiveling Support Brace

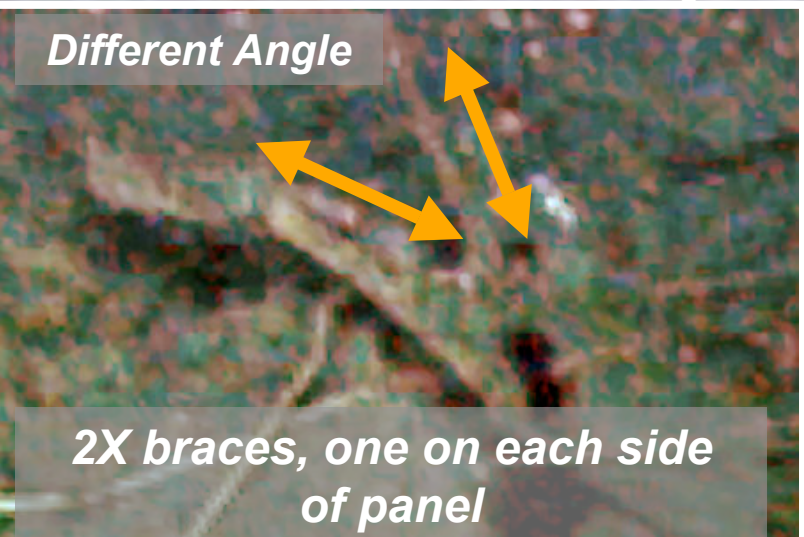
Mounting Bolt?

Radio Antenna

Mounting Bolt?

Mount with Pin or Cotter Key

Hinged or bent in the approx. middle?



Different Angle

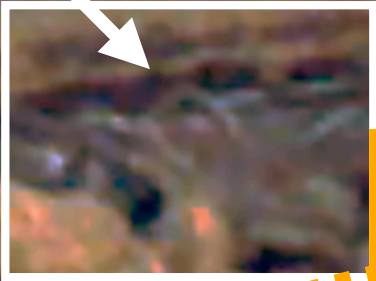
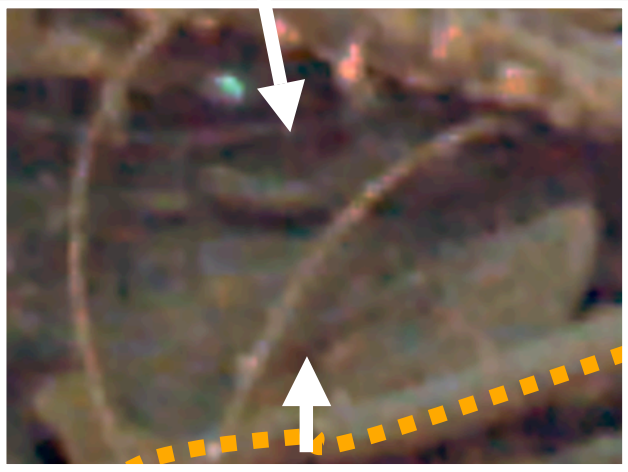
2X braces, one on each side of panel

Is this the deck cover from the forward Torpedo Loading Hatch?

USS GRUNION
Forward Battery Room

Cables snarled around
the Radio Mast truck
and the Torpedo
Loading Mast

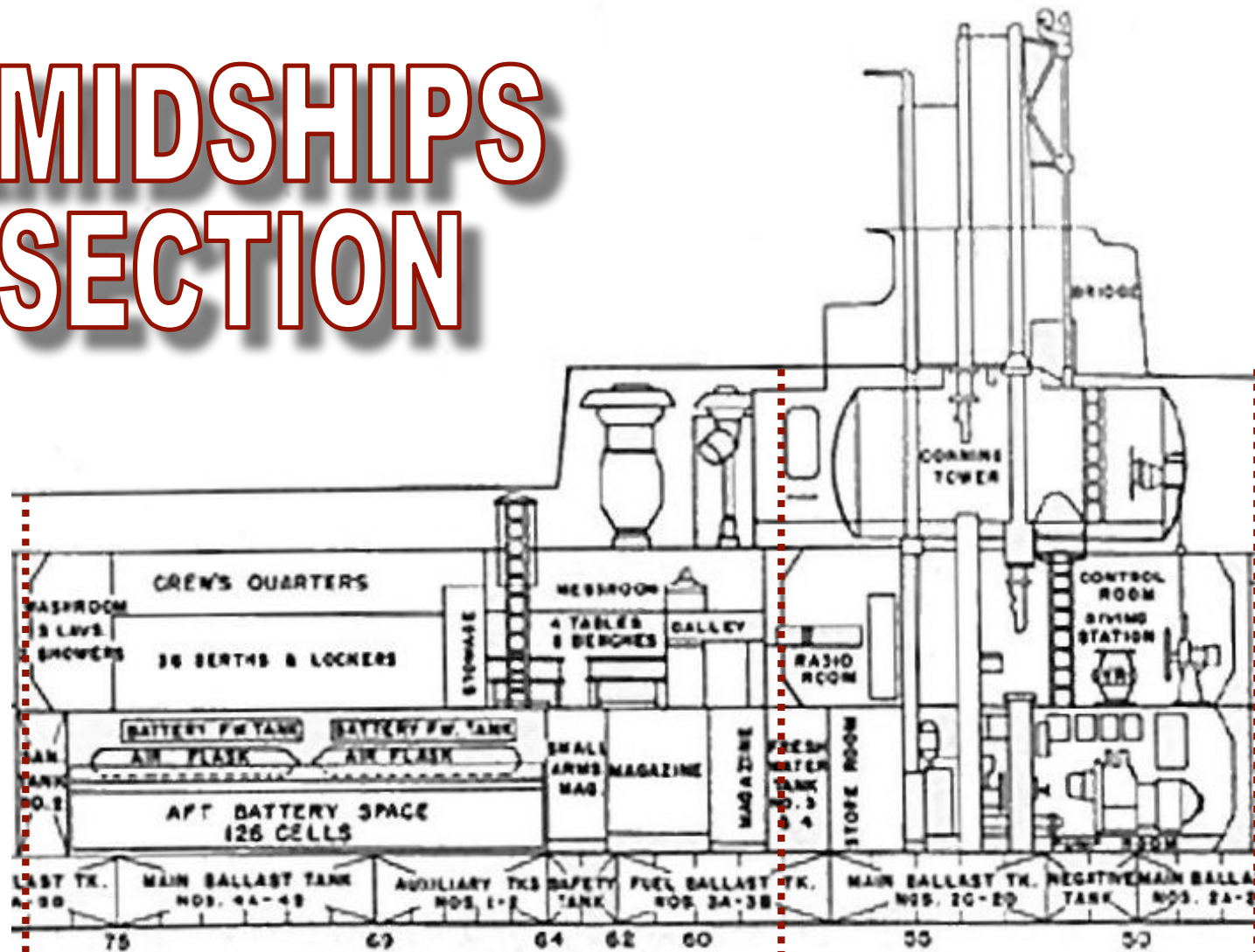
Locking
Wheel



Possibly the TORPEDO LOADING HATCH
Could it have been blown off its hinges?

Possibly either a light base, or the
sheave attached to the Radio Mast
truck

AMIDSHIPS SECTION



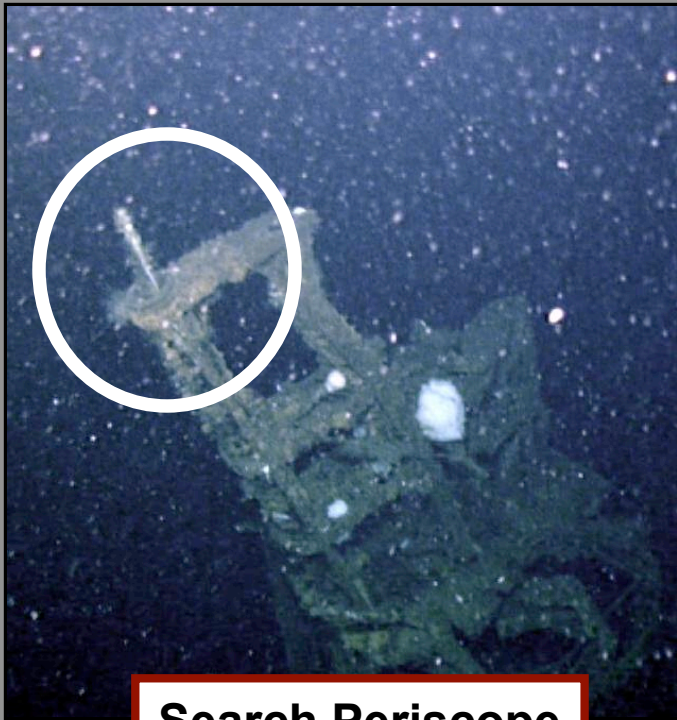
After Battery Room

*Control Room
Conning Tower*

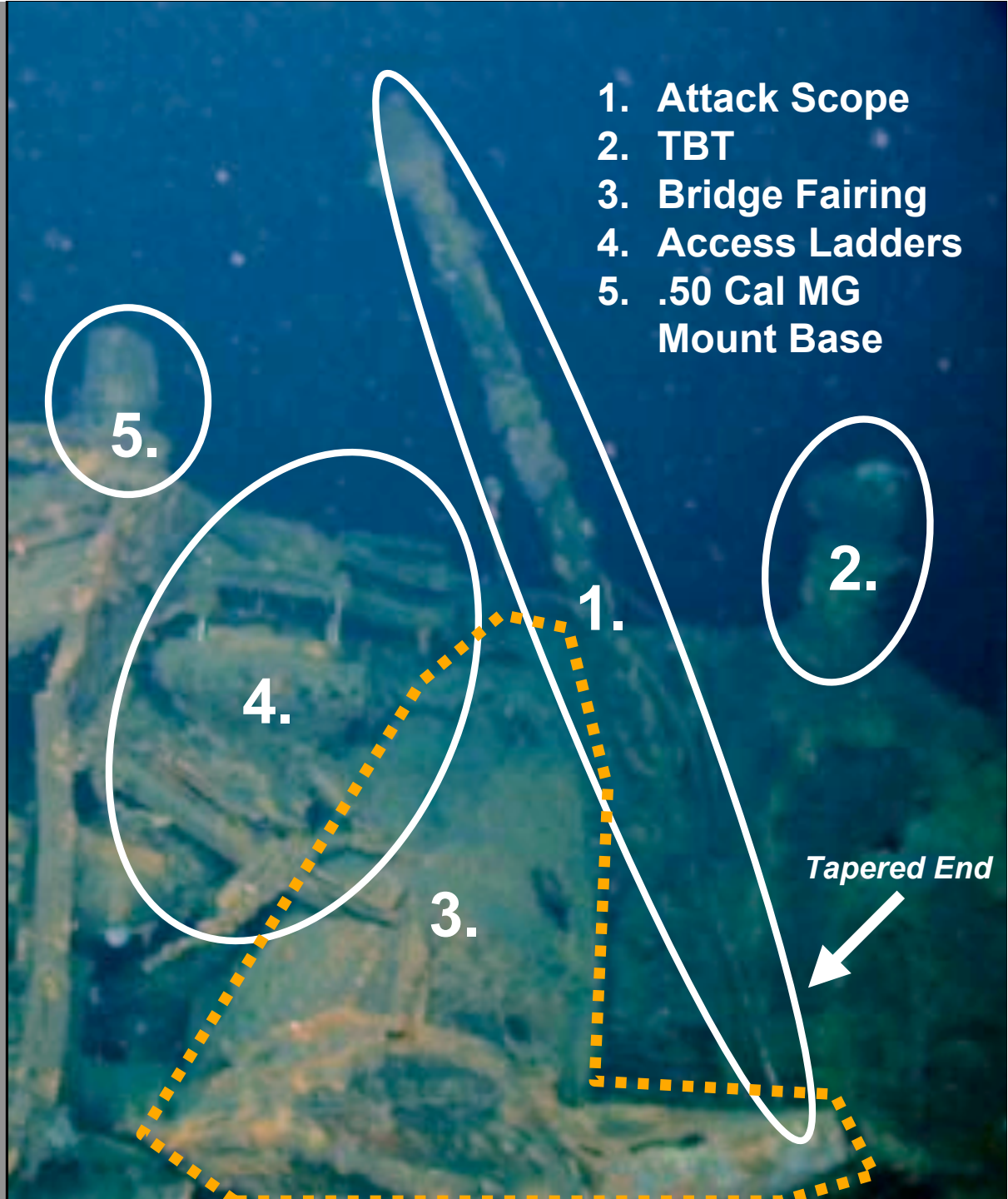
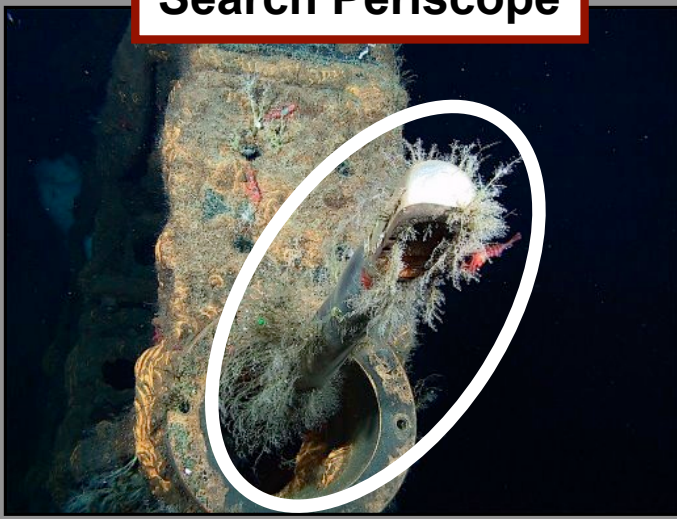
#77

#58

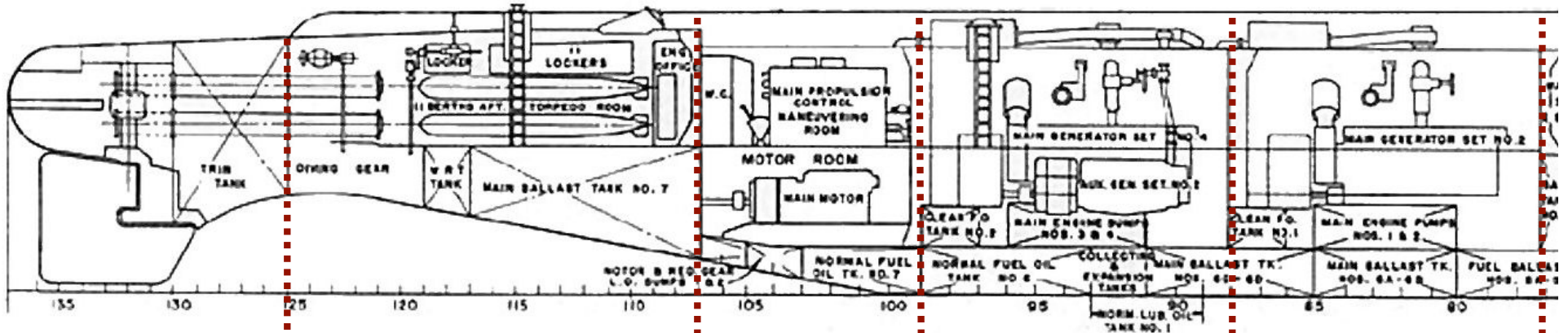
#47



Search Periscope



AFT SECTION



After Torpedo Room

Maneuvering Room

After Engine Room

Forward Engine Room

#125

#107

#99

#88

#77